



# KENTUCKY FFA FOUNDATION

SPONSORSHIP OPPORTUNITIES

2026



KENTUCKY  
FFA FOUNDATION

# Growing Leaders. Building Communities. Strengthening Agriculture.

When you partner with the Kentucky FFA Foundation, your support brings programs, recognition and the opportunity for a brighter future to the thousands of Kentucky FFA members across the Commonwealth.

**34,964** Kentucky students enrolled in Agricultural Education

**25,178** Kentucky FFA members, Grades 6-12

**325** Middle and high school agriculture teachers

## **The Kentucky FFA Foundation**

is an independent organization devoted to accomplishing the aims of the FFA mission: "To make a positive difference in the lives of students by developing their potential for premier leadership, personal growth, and career success through agricultural education."

We work to ensure the success of the total program of agricultural education in Kentucky by

- Providing recognition to Kentucky FFA members
- Supporting the work of the Kentucky FFA Association
- Supporting the Kentucky FFA Leadership Training Center
- Supporting local FFA chapters and members
- Supporting Teachers of Agriculture
- Supporting Teacher Education





# Annual Giving Recognition Levels



Recognition Level	Annual Giving Range	Newsletter Feature	Podcast Feature	One Posting with KY FFA Works	Logo in Annual Report	Exclusive Web Badge	Invitation to Annual Sponsor's Dinner
 Distinguished Star Partner	\$50,000+	✓	✓	✓	✓	✓	✓
 5-Star Partner	\$25,000 – \$49,999		✓	✓	✓	✓	✓
 4-Star Partner	\$10,000 – \$24,999			✓	✓	✓	✓
 3-Star Partner	\$5,000 – \$9,999				✓	✓	✓
 2-Star Partner	\$2,500 – \$4,999					✓	✓
 1-Star Partner	\$1,000 – \$2,499						✓

Donors are recognized based on total annual giving, which can include multiple types of support across programs.

# State FFA Convention

The premier opportunity to reach thousands of engaged young people who are together to learn and grow.

## Kentucky FFA State Convention at a Glance

- 3,260 FFA members and stakeholders attended convention in 2025.
- \$96,595 in grants and prizes were awarded at last year's convention.
- 1,000+ students were recognized on stage during five general sessions.

## Opportunities at Convention

- Exhibit at our multi-day expo
- Conduct leadership workshops
- Volunteer to judge a wide variety of student contests
- Your organization's logo on signage displayed prominently throughout the exhibit hall
- Support student recognition by contributing prize money to state winning teams and individuals





Deliverables and Promotions	★★★★★ 5-Star \$15,000	★★★★ 4-Star \$10,000	★★★ 3-Star \$6,000	★★ 2-Star \$2,500	★ 1-Star \$1,000
Recognition on the Kentucky FFA Convention Partners web page	✓	✓	✓	✓	✓
Thank you note from an FFA member who has been positively impacted	✓	✓	✓	✓	✓
Personalized video from an FFA member who has been positively impacted	✓	✓	✓	✓	✓
Reserved seating and shoutout as a special guest during convention sessions. (If in attendance)	✓	✓	✓	✓	✓
Invitation to Kentucky FFA Foundation Sponsors dinner	✓	✓	✓	✓	✓
Print ad in our convention program, distributed to all attendees	Full Page (preferred placement)	Full Page	Half Page	Quarter Page	Names Listed
Recognition and promotion on Kentucky FFA social media accounts. (Business account will be tagged, if applicable)	One paid boost post with tag & name <u>listed</u> in additional posts as "96th State Convention is brought to you by."	One paid boost with tag	Logos listed in single post with tag	Logos listed in single post with tag	
Opportunity to contribute to gift bags and prizes used during pre-session events	✓	✓	✓		
Booth space in Expo Hall	10x20 booth space (preferred location)	10x20 booth space	10x10 booth space	10x10 booth space	
Brand logo featured on the Kentucky FFA convention app	✓	✓	✓		
Logo featured on more than 12 physical banners in high-traffic convention locations	✓	✓	✓		
30-second promotional video(s) aired during general sessions	Two Videos & pre-session big screen promotion	Two videos	One video		
Logo and video featured on the Spotlight Stage	✓	✓			
Opportunity to provide greetings to State Convention Foundation Ambassadors during their training workshop	✓	✓			
Opportunity to facilitate a leadership workshop	✓	✓			
Opportunity to bring greetings at a meal function	✓				
Logo featured on the official Kentucky FFA Convention t-shirt	✓				
30-Second Ad read on <i>Growing Kentucky's Leaders</i> podcast	✓				

# Give FFA Day

February 26, 2026

A national day of giving to support the next generation of agricultural leaders.

Each year, FFA supporters across the country unite on Give FFA Day to raise critical funds that help students grow their leadership, career, and life skills through agricultural education and FFA.



Your company or organization can make a powerful impact on Give FFA Day.

## Challenge Gift Sponsor

As a Challenge Gift sponsor, your gift is used to unlock matching donations and build momentum throughout the day.

- Publicly recognized on state FFA social media and email promotions
- Your company name and logo featured in Give FFA Day campaign materials
- Featured in donor communications and on Kentucky FFA social media outlets

## Internal Company Matching Campaign

Engage your employees by offering internal donation matching on Give FFA Day. Your company matches employee donations dollar-for-dollar (or at a set percentage).

You can combine with casual dress days, team challenges, or employee shoutouts internally or on social media to increase participation.

Kentucky FFA Foundation can provide:

- A custom giving link
- Social graphics to encourage participation
- Sample messaging for internal email or newsletter

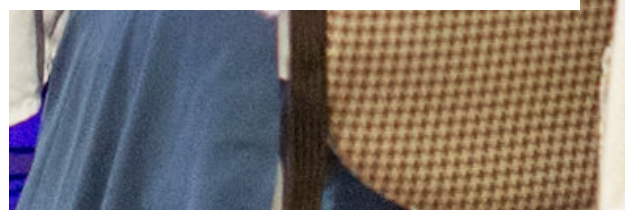


# Blue & Gold Gala

An evening of support and celebration where champions for Kentucky FFA come together to help our programs thrive.



Deliverables and Promotions	Presenting \$15,000 <i>1 available</i>	Platinum \$10,000	Gold \$5,000	Silver \$2,500	Bronze \$1,000
Gala Tickets	Four premium tables (32 tickets) with priority placement	Three premium tables (24 tickets) with priority placement	Two premium tables (16 tickets)	One reserved table (8 tickets)	4 tickets
Recognition on Gala website	Logo	Logo	Logo	Logo	Name listed
Recognition in event program	Logo	Logo	Logo	Logo	Name listed
Recognition from stage during event	✓	✓	✓		
Logo on Gala social media	✓ pre- and post-event	✓	✓		
Logo on Gala signage (physical and digital)	✓	✓	✓		
Recognition in post-event thank-you email and sponsor highlights	✓	✓			
VIP service during event	✓ Exclusive	✓			
Recognition in Kentucky FFA Foundation newsletter	✓				
Logo on event invitation	✓				
Opportunity to speak from stage during event program	✓				
Recognition as Presenting Sponsor in all event materials ("Blue & Gold Gala presented by [Your Name]")	✓				
First right of refusal for next year's Presenting Sponsorship	✓				



# Chapter Grants

Provide local FFA chapters with funds for programming, community service projects, or student development opportunities.



## **Rising Sun Grant**

Available to support the expansion of agricultural education and support those educators who dedicate their lives to teaching and advising.

Rising Sun would provide a one-time grant up to \$5,000 to a school that opens an agricultural education program or to a program in transition.

## **Ag Innovation Grant**

Designed to help Agricultural Education programs transform student instruction and outreach to the community.

Applications must demonstrate the proposed project will positively impact student achievement and the local agriculture economy. Ag programs may apply up to \$10,000.

Applications do not require a match, but preference will be given to applications that include additional local funds.

## **Ag Achiever Grant**

Intended to help Agricultural Education programs enhance learning opportunities for students. Enhancements may include but are not limited to the purchase of new equipment or teaching resources, modifications to existing equipment or facilities, or implementation of innovative programming.

Ag Programs may apply for up to \$5,000. Grant applications over \$2,500 require a dollar for dollar match.



# Student Grants & Awards

## Supervised Agricultural Experience (SAE) Grant

Support student-led entrepreneurial or experiential agriculture projects.

Support can be in a certain geographical area, by pathway (scan QR code for details), or at large.



In last cycle, the Foundation was only able to fund 38% of total requests.

—> \$500 funds one SAE Launch Grant.

## FFA Jacket Grant

The blue corduroy jacket is one of FFA's most recognized symbols and represents belonging, pride, and opportunity. As Kentucky FFA membership continues to grow, the Foundation's FFA Jacket Grant ensures that every student, regardless of financial need, can proudly wear the jacket and fully participate in FFA. A \$100 gift provides a jacket for one member, helping extend one of FFA's longest-standing traditions to the next generation of leaders.

—> \$100 provides a jacket and a scarf or tie.

## Career and Leadership Development Event (CDE/LDE) Support

Kentucky FFA members develop their skills in communication, critical thinking, and career readiness through competitive events held across the state.

Sponsorship of a Career or Leadership Development Event provides prize money for the top three individuals or teams and includes a personalized plaque recognizing your company's support.

This investment celebrates student excellence while highlighting your commitment to developing Kentucky's next generation of agricultural leaders.

—> \$1,000 per competitive event

## WLC Grant

Each summer, FFA members from across Kentucky travel to Washington, D.C. to participate in the Washington Leadership Conference; an experience that challenges them to grow as leaders and servant citizens.

The Kentucky FFA Foundation provides \$1,000 grants to students who need financial assistance to attend with their local FFA chapter.

These grants are separate from the Bill Gatton Foundation's state bus scholarships and help ensure that every member has access to this life-changing opportunity, regardless of financial circumstances or travel preferences.

—> \$1,000 sends one student to the Washington Leadership Conference.



# Agriculture Teacher Support

Behind every thriving FFA member is a dedicated agriculture teacher. Your support helps provide professional development, industry certifications, and hands-on learning opportunities that keep teachers current in a constantly evolving agricultural landscape. Investing in agriculture teachers means investing in every student they teach, and in the future of Kentucky agriculture.

## **Sponsor Industry-Focused Professional Development**

Fund a training, workshop, or certification that connects teachers with current practices in your field.

## **Provide Classroom or Program Resources**

Donate equipment, materials, or curriculum support to enhance hands-on learning for students.

## **Host Informational Tours or Field Experiences**

Invite teachers to visit your business, farm, or facility for an industry tour and learning experience.

## **Support Teacher Recognition Programs**

Contribute to awards or mini-grants that celebrate outstanding educators.



# In-Kind Gifts

Support Kentucky FFA through the donation of equipment, products, or services that benefit students, chapters, or statewide events. In-kind gifts also include employee engagement opportunities such as volunteering, mentoring, or serving as judges at competitions.

All in-kind contributions are valued at fair market price and count toward your annual giving level recognition, allowing your support to be recognized alongside cash gifts while directly impacting FFA programs and members.



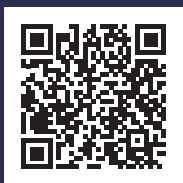


Learn more  
about the  
Kentucky FFA  
Foundation

Website  
[kyffa.org](https://kyffa.org)

Podcast  
Growing Kentucky's  
Leaders (*on your favorite  
podcast platform*)

Email Newsletter  
Sign up



# Next Steps

Thank you for considering the Kentucky FFA Foundation as an organization you want to support. It is our honor to steward gifts in a way that positively impacts young people across Kentucky.

**“Each time we meet an FFA member, we’re reminded that investing in students is one of the wisest things we can do. These young people are thoughtful, driven, and ready to rise to the moment. On behalf of the Kentucky FFA Foundation Board, thank you for your support. We are committed to stewarding your generosity with transparency and care.”**

— Kirby Green  
*Kentucky FFA Foundation Chair*

Contact us to discuss tailoring a package that will help your or your organization make the most meaningful impact.



Ruth Ann Fink  
[ruthann.fink@kyffa.org](mailto:ruthann.fink@kyffa.org)  
859-325-3089



KENTUCKY  
FFA FOUNDATION

Kentucky FFA Foundation  
P.O. Box 8  
Flemingsburg, KY 41041  
[kyffa.org](http://kyffa.org)

