



KENTUCKY
FFA FOUNDATION

2021

Kentucky FFA Annual Report





Vision

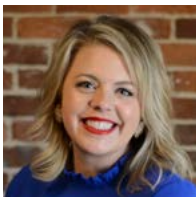
The vision of Kentucky FFA is to grow leaders, build communities, and strengthen agriculture.

Mission

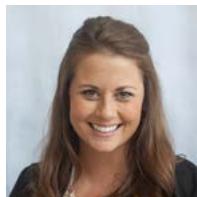
The Kentucky FFA Foundation is an independent organization devoted to accomplishing the aims of the FFA mission: "To make a positive difference in the lives of students by developing their potential for premier leadership, personal growth, and career success through agricultural education." The Kentucky FFA Foundation will ensure the success of the total program of Agricultural Education in Kentucky by:

- Providing recognition to Kentucky FFA members
- Supporting Teachers of Agriculture
- Supporting the work of the Kentucky FFA Association
- Supporting Teacher Education
- Supporting the Kentucky FFA Leadership Training Center
- Supporting State Staff
- Supporting local FFA chapters and members

Contact us



Sheldon McKinney
Executive Director
606-782-4620
sheldon.mckinney@kyffa.org



Emily Mitchell
Development Coordinator
270-670-3621
emily.mitchell@kyffa.org



Ashley Weaver
Gift Administration Specialist
ashleyweaver@kyffa.org

Kentucky FFA Foundation
P.O. Box 8
Flemingsburg, KY 41041

-  kyffa.org
-  facebook.com/kyFFA
-  [@kentuckyFFA](https://twitter.com/kentuckyFFA)
-  [kentuckyffa](https://www.instagram.com/kentuckyffa)



Dear Friends,

It's with great pleasure that I present to you our 2021 Kentucky FFA Foundation Annual Report. This document serves as a way for us to share the impact of your gift on students across the Commonwealth and how seriously we take our commitment to steward and care for the money you've entrusted to us. We truly are co-creators of a better future and we could not do this inspiring work without your gift.

I also must mention that 2021 marks my ten year anniversary as the Executive Director of the Kentucky FFA Foundation. We were founded in 1987 and I began interning for the Foundation under the legendary Billy Ray Smith from 2005-2008, then returned full time in 2012. I have been deeply invested in our mission, vision and impact since I was a college student. I mean this when I say I am more excited about our future today than I was yesterday. We have come a long way, but we're just getting started.

This year we welcomed a new 5-Star sponsor in First Southern National Bank! We had three individual Forever Blue donors including Nick Carter, Delmer Dalton and Bill Gatton, and we had two communities come together to start Forever Blue endowments locally — Lyon County & Christian County. Their gifts will impact generations of future FFA leaders.

We also came together to get back to some of our favorite traditions and hosted an in-person State Fair, Gala, and modified convention. It took so many folks to make these time-honored events happen and be offered safely to our students and friends.

Just when we were wrapping up a successful 2021, the devastating Western Kentucky tornadoes took place on December 10th. Folks in the path of the storms woke up on that Saturday morning to a different world. Our phone immediately started ringing with folks asking, "What is FFA going to do? How are you helping?" Then donations started pouring in from across the country. In less than three weeks, we received over \$55,000 from 135+ donors in 26 different states with gifts ranging from \$10 to \$10,000. I had the honor of opening notes from across the country with prayers, well wishes and notes of, "it's not

much, but I hope it helps." In all of my life, I will never forget them.

In January of 2022, we got to send that money directly to FFA members impacted by the storms. We had 17 FFA members who lost their homes and most all of their physical possessions. We had over a dozen others who had significant damage to their homes, farms or SAE projects. Because of the generosity of donors, we were able to award them more than \$55,000 in direct relief checks for their families. Thank you for trusting us in good times and in bad. It's an honor we certainly don't take lightly.

When we actually closed our books on 2021, I reflected on our donor list and saw individuals of all ages and stages in life, who believe in the mission of FFA enough to invest in its members. I see companies that believe in their future customers, employees and clients enough to invest in our mission. I see people who still believe in the good in the world. People who, against viruses, turmoil, tornadoes and a host of other challenges are still hoping, still believing and investing in a better future.

The Kentucky FFA Foundation believes in that better future too. You can trust us to stay true to our mission.

A handwritten signature in black ink that reads "Sheldon McKinney". The signature is fluid and cursive.

Sheldon McKinney
Executive Director
Kentucky FFA Foundation
sheldon.mckinney@kyffa.org



Supporters, Donors & Friends of the Kentucky FFA Foundation,

This annual report contains many impressive facts, figures, and stories. You'll read about our single greatest year on record in terms of donations. There are heartwarming stories about the Foundation stepping up in times of tragedy to assist our families and students in Western Kentucky after the tornadoes in December of 2021 and how we stewarded gifts from across the country. Learn about how many new donors joined the ranks of those supporting FFA and ag education around the state. Impressive would be how I would describe everything laid out in this report.

What I really want each and every one of you to know, whether you donate \$10 or our largest single donation to date of \$300,000, your participation is important to the Foundation and to all those students across Kentucky. Your donation allows students stepping into an agriculture classroom for the first time to have the most inspiring experiences full of opportunity. From an FFA jacket grant, seed money to start an SAE project, or prize money after competing, the Foundation provides life-changing experiences for all FFA members. Your donation to the Foundation made it possible for an in-person state convention to be held — yes, modified, but held and also broadcast for everyone to see: free of charge. Unlike other youth organizations, our members were invited back in person or to at least watch online for free to learn if they

won their speech, parliamentary procedure, star contest, and all the other contests and recognitions.

FFA, ag teachers, and students continued their work locally, regionally, and across the state. Our dedicated team on the Foundation Board and our staff led by Sheldon, our Executive Director, also continued our efforts and made it a banner year. We added to the ranks of Forever Blue donors, held our annual Blue and Gold Gala in Bowling Green, executed a successful Give FFA Day, and signed up new donors for estate gifts that will change the trajectory of the Foundation in a highly meaningful manner.

That doesn't mean we don't need you. Quite the opposite. Success begets success and with your willingness to share, your generosity to an organization that you already know and love (or you wouldn't be reading the annual report), we can assist more young people already working hard to achieve the tenets we believe in: growing leaders, building communities, and strengthening agriculture. Join the ranks of those who "believe in the future of agriculture," and find your way to support the Kentucky FFA Foundation.

Thank you,

Anthony H. Koch
Chair
Kentucky FFA Foundation



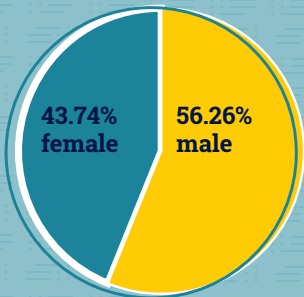
by the numbers

2021

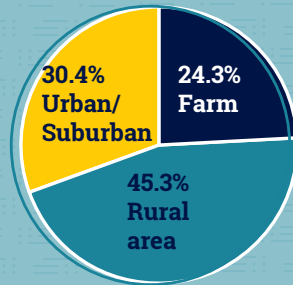


30,176

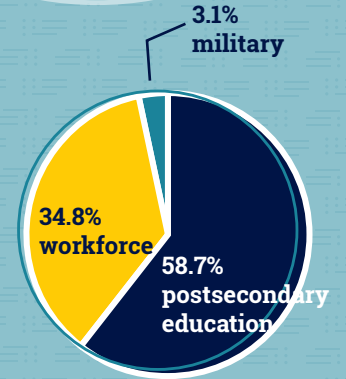
students enrolled in agricultural education grades 7-12



gender



where they live



plans after high school

15,700

Kentucky FFA members

158

FFA chapters in Kentucky

16,043

students with SAE projects

1,687,952

hours spent in 2021 on SAE projects

59%

of all agriculture students in Kentucky have SAE projects

\$11,211,581

total income from SAE projects

2021 KENTUCKY FFA FOUNDATION

Board of Trustees



Robert Alexander - Hopkinsville

Robert Alexander is a Hopkinsville native and past Kentucky FFA State officer. He has taught agriculture at the high school and collegiate level. He now serves on the board as a representative of Farm Credit Mid-America where he is the Director of Retail Operations for Southwest Kentucky.



Sharon Burton - Columbia

Sharon Burton is the owner and publisher of The Farmer's Pride, a statewide agricultural newspaper also available to all FFA chapters. She also owns and operates her local paper, the Adair County Community Voice. Sharon is a trusted voice in Kentucky agriculture. Sharon's nine year term on the Kentucky FFA Foundation Board came to a close in 2021.



Nick Carter - Lexington

Nick Carter is a retired energy company executive with a passion for FFA, which he credits for giving him a successful start in life. He uses his vast leadership experience to serve on a variety of boards, including the University of Kentucky FarmHouse Fraternity Board, Community Trust Bancorp, Alliance Resources Partners and the Board of Tacoma Resources, LTD. Nick was a Kentucky FFA State Sentinel, from the Hustonville FFA Chapter.



Matt Chaliff - Mt. Vernon

Matt Chaliff is the Executive Secretary of the Kentucky FFA Association and Agricultural Education Consultant for the Kentucky Department of Education. He is a former Kentucky FFA state officer and agriculture teacher. His leadership and guidance has moved Kentucky FFA and agricultural education in Kentucky forward.



Brandon Davis - Frankfort

Brandon Davis serves as the Kentucky FFA Advisor and the State Supervisor of Agriculture Education. He's a former state FFA officer and agriculture teacher. Brandon is a visionary for Kentucky agricultural education. He serves on the National FFA Board of Directors representing the Eastern Region of the National Association of Supervisors of Agricultural Education.



Charlie Edgington - Lexington

Charlie Edgington is an entrepreneur who owns and operates Red Barn & Associates, which sources and sells a variety of farm equipment, as well as Edgeview Properties. He also farms on his family operation in Garrard County. Charlie is an expert at networking, building relationships and raising support for Kentucky FFA.



Arthur Green - Elkton

Arthur Green is a retired agriculture teacher from Todd County. He served on the Board of Trustees as the Kentucky FFA Alumni President until June of 2021. Mr. Green is the Mayor of Elkton, and regularly volunteers for the local FFA Alumni chapter and several other community causes.



Kirby Green - Owensboro

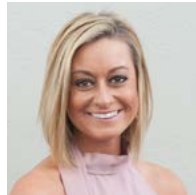
Kirby Green is a Top Producer Account Manager for Bayer. She is a past Kentucky FFA State President and also spent time as a high school agriculture teacher. Kirby is excellent at building relationships and making connections that benefit Kentucky FFA. She serves on the board of EDGE Mentoring and is the host of a professional development podcast called Sharpen.



John Hammond - Bardstovwn

John Hammond is an agriculture teacher at Thomas Nelson High School in Bardstovwn, KY. He has been teaching agriculture for 13 years and is excited to share the perspective of agricultural educators as the past

President of the Kentucky Association of Agricultural Educators.



Ashley Macy - Louisville

Ashley Macy is a Relationship Manager with CoBank, primarily working with cooperatives across the country. A former FFA member and Indiana native, Ashley helps Kentucky FFA make new connections and stronger

relationships with many sponsors and donors.



Adam Hinton - Flemingsburg

Adam Hinton is the Vice President of Hinton Mills, an operation of five retail farm supply locations and feed mills based in Fleming County. He is also Director of the Kentucky Welding Institute, a private welding

school in Flemingsburg. Adam is founder and President of A Better Community Foundation, a not-for-profit, grass roots fund raising and advocacy organization for agricultural education in Kentucky.



Dr. Mike McDermott - Richmond

Dr. Mike McDermott is an associate professor of agriculture at Eastern Kentucky University. His teaching duties include agricultural power and Career & Technical Education/Ag Education. With more than 35

years of teaching experience at the secondary and post-secondary levels, he still enjoys the art of teaching in the classroom.



Kyle Kelly - Owenton

Kyle Kelly is the Director of National Affairs for the Kentucky Farm Bureau Federation. He's a former

Owen County FFA member, and currently farms in his hometown. Kyle uses his expertise in building relationships to elevate Kentucky FFA and he's a tremendous advocate for FFA in Washington, D.C., Frankfort and communities across the Commonwealth.



Myron Moore - Frankfort

Myron Moore is the Chief Compliance Officer for Expree Credit Union. He is a former Kentucky FFA State Officer and agriculture teacher. He serves on the board as a representative of the Kentucky FFA Alumni & Supporters Council.



Anthony Koch - Paris

Chairman of the Kentucky FFA Foundation, Anthony Koch is the Director of Sales and Marketing for Hallway Feeds, providing feeds exclusively to the equine

industry. Anthony has worked to develop feeding programs for farms and race trainers domestically and internationally and worked with the past two Triple Crown winners. He is a former Kentucky FFA State Officer and a positive advocate for FFA to the equine industry around the world.



Quint Pottinger - New Haven

Quint Pottinger is a former Kentucky FFA president and a full time corn, wheat, rye & soybean farmer in Nelson County. Quint is a passionate advocate for agriculture and developing young farmers at home and abroad. He

serves as as the young farmer chair on the Nelson County Farm Bureau board and as a farmer advocate on the Kentucky Soybean Association board.



Keelan Pulliam - Danville

Keelan Pulliam is the owner and President of Pulliam & Associates Consulting. He is retired from Syngenta where he last served as President of Syngenta Flowers

North America. Keelan is a former Kentucky FFA State Officer and an avid supporter of FFA and youth development.

2021 KENTUCKY FFA FOUNDATION

Board of Trustees



Clint Quarles - Georgetown

Clint Quarles is Staff Attorney for the Kentucky Department of Agriculture and has practiced agriculture law at KDA for the past 15 years. Clint also teaches an Ag Law course at the University of Kentucky

and farms in Scott and Fayette Counties. He was a member of the Scott County FFA.



Billy Ray Smith - Bowling Green

Billy Ray Smith is the former Commissioner of Agriculture in Kentucky and also the Executive Director Emeritus of the Kentucky FFA Foundation. He has been a lifelong servant to the agricultural community.



Jackson Tolle - Maysville

Jackson Tolle serves as the Director of Young Farmer Programs for Kentucky Farm Bureau. Jackson is a former FFA member who has worked in agricultural education. Jackson and his family are also premier

cattle producers with T&S Farms. He serves on the Kentucky FFA Foundation board in an appointed position for Kentucky Farm Bureau.



Mary Beth Shackelford - Trenton

Mary Beth Shackelford is a Farm Loan Officer with the USDA Farm Service Agency, based in Hopkinsville.

An American FFA Degree recipient who is passionate about the agriculture industry, she also serves as the

President of the Christian County Agribusiness Association.



J.R. Shinkle - Verona

J.R. Shinkle is a trusted and connected farm equipment dealer with Wright Implement. He is a former Kentucky FFA State Officer who is passionate about the difference FFA makes in students' lives.



FOREVER BLUE DONOR

Nick Carter

Lincoln County Graduate Endows Local Program

A Hustonville High School alum is giving back in a big way to the program he says helped him find success in his career.

Nick Carter graduated from Hustonville High School in 1964. A Lincoln County farm boy, Carter naturally gravitated toward agriculture classes and FFA in high school.

After high school, Carter worked in various capacities within the coal industry, and at one time ran the nation's largest mineral landholding company. He credits his farming background and his experiences in FFA for giving him the work ethic, leadership training, and confidence it took to be successful in business.

"All the training I received in FFA about how to communicate, manage meetings, give public speeches, and how to respond to others has been extremely helpful in my career," said Carter. "Once I was given an opportunity to give back, it really became a passion of mine to help the Kentucky FFA Foundation raise as much money as we can to help as many kids as we can."

In addition to being an annual donor to Kentucky FFA, Carter gives generously of his time. He serves on the Kentucky FFA Foundation Board of Directors, and regularly volunteers as a judge for FFA contests.

This year, however, Carter decided to focus some of his generosity locally. He committed \$60,000 to the Kentucky FFA Foundation's Forever Blue Endowment fund and stipulated that the dividends of that gift benefit the Lincoln County High School agriculture program and FFA chapter. Carter plans to continue to contribute to the Lincoln County endowment, and is working with other individuals and businesses from Lincoln County to grow the fund even more. He would like to see the fund reach \$100,000.

"This is such a positive opportunity for us, and we are so appreciative of Mr. Carter," said Harvey Franklin, one of the three agriculture teachers at Lincoln County High School.



"We've got a very diverse group of students involved in agriculture here," he said. "We have a lot of good community support. We have always worked to make our program self-sufficient – through fruit sales, greenhouse sales – that sort of thing, but this is an amazing opportunity for a renewable gift that can pay some really big dividends."

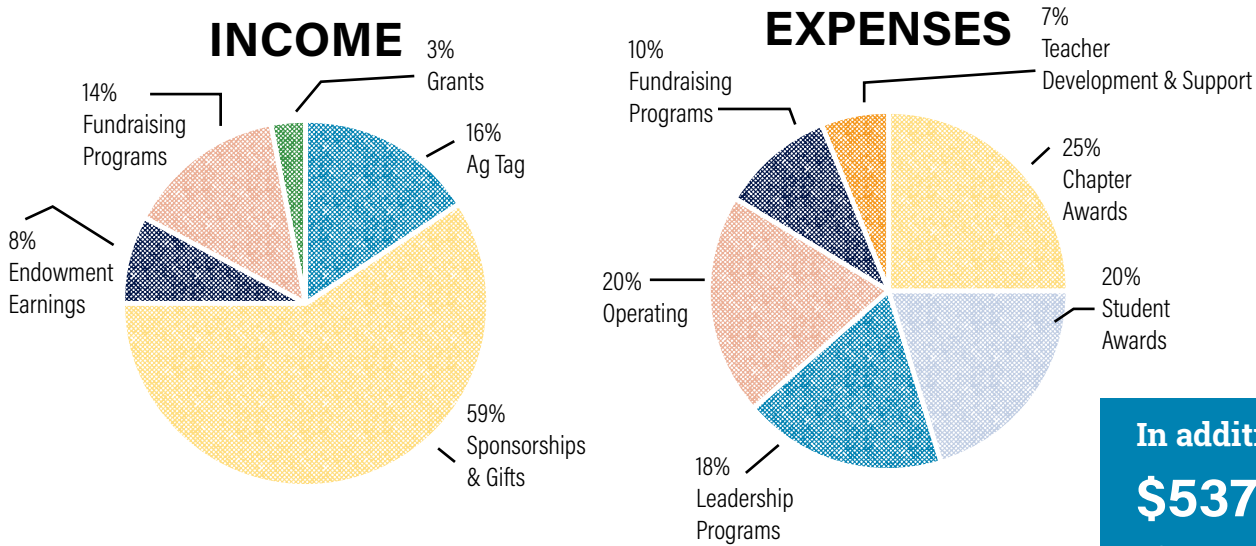
"Nick Carter should be commended for leading the effort to give back in his hometown," said Sheldon McKinney, the Kentucky FFA Foundation's executive director.

The Foundation created the Forever Blue Endowment fund to give donors like Carter a framework for making large gifts to benefit FFA and direct those gifts to the local chapter or chapters of their choice.

"People want to give," said McKinney. "They believe in the mission of FFA, and they believe in the town that brought them up. When you offer an opportunity to give locally, give sustainably, and have it managed in a professional way that will be beneficial for generations, they see their opportunity to do exactly what they've been wanting to do."

"If you want to make an effective gift that will have a lasting impact on individuals and the community, a gift to assist an FFA member in leadership training, an SAE project, a trip to the state fair, or anything else, is a gift that will never be forgotten," said Carter. "You will be personally rewarded and the community will benefit from it."

2021 Income & Expenses



2021 total income
\$1,532,121.29

2021 expenses
\$945,238.35

In addition,
\$537,752.16
of our 2021 income
was gifts designated
for our Forever Blue
Trust.

Statement of Financial Position

Beginning Assets on 12/31/20\$5,414,502.53

Current Assets

Cash on Hand\$447,931.31
Collectibles Inventory (tractors/knives)\$3,000.00
Accounts Receivable\$609.59
Total Current Assets.....\$451,540.90

Invested Assets

LEAD Endowment.....\$5,085,232.88
Forever Blue Endowment.....\$987,163.26
Total Invested Assets\$6,072,396.14

Current Liabilities

Accounts Payable.....\$13,875.00
Ending Assets on 12/31/2021.....\$6,510,062.04

Coming Together

When Tornadoes Struck

WESTERN KENTUCKY ON DECEMBER 10, 2021, THEY WREAKED HAVOC ON THE LIVES, HOMES AND LIVELIHOODS OF THOUSANDS, INCLUDING MANY KENTUCKY FFA MEMBERS AND THEIR FAMILIES.

The heart of our foundation's mission is to support students in our Commonwealth, and as we scrambled to come up with the best ways to do that, donors from Kentucky and across the United States began contacting us, asking how they could help. We decided the best way was to collect funds and send them directly to our affected members.

We are humbled and grateful to say that 133 donors from 26 states gave \$55,000 to help Kentucky FFA members who have been impacted by this natural disaster. These donations came from individuals, companies, FFA chapters and churches.

By early January, we had distributed these donations to 30 FFA members from Logan, Marshall, Butler, Caldwell, Graves, Hopkins, Muhlenberg and Taylor counties. We gave \$2,500 to 17 members who lost their homes, and \$1,000 to 13 students whose homes, farms or SAE projects were significantly damaged.

The network of people across the nation who make up the "FFA Family" will continue to support our FFA members as they rebuild their lives. We are honored to have the opportunity to help facilitate that.



Many FFA chapters have participated in cleanup and relief efforts above and beyond what the Kentucky FFA Foundation has done.

Funding Our Future

Shark Tank and SAE Grants

**ARE TWO WAYS WE DIRECTLY
FUND INDIVIDUAL KENTUCKY FFA
MEMBERS.**

And our investment pays off. As you can see from the stories of these three recent Shark Tank grant recipients, Kentucky FFA members turn opportunity into results - for themselves, their chapters, and their communities.



After receiving a \$500 SAE Grant to help offset the expense of a honey extractor, Logan County FFA member Katherine Woodard was able to double her number of hives. She also began partnering with others in her chapter to help pollinate crops for their SAE projects. To continue her growth, Katherine applied for and received a \$5,000 Shark Tank Grant in 2021. With these funds, she has built her "Honey House," which is a storefront where she sells not only her honey, but the products of other FFA members' SAE projects as well. She was able to finish the building in time for her first ever "Honey Festival," this July. The festival, which drew 1,200 visitors, included several FFA members featuring their SAE projects, food trucks, and an additional 25 vendors.



Will Bonta, a Green County FFA member, received a \$5,000 Shark Tank Grant to help grow his SAE project, Bonta Beef. Will's business raises, finishes and sells high-quality beef to a wide variety of customers. Will used his Shark Tank Grant to purchase a livestock trailer for hauling beef to the processing facility, as well as for operational expenses. In addition, he purchased custom hats, which he uses to market Bonta Beef.



Carlisle County FFA member Jarren Bruer operates a mum business on his family farm where he sells mums both at the wholesale and retail level. He used his \$5,000 Shark Tank grant to purchase mum slips, pots, soil and fertilizer, allowing him to realize a much larger profit on this year's mum crop.



Impact

The Kentucky FFA Foundation touches nearly every county with our programs. Here's a small sample of our impact in each of the 12 FFA regions of our Commonwealth.

"I had an amazing time at camp at the end of June last year. The officer classes really helped me learn my role in my chapter and met others who had the same responsibilities as me. Chapter hour was amazing and my officer team came up with many goals, we've already completed one of them. My favorite memory at camp was definitely the Barnyard Olympics, specifically tug of war when I fell in the pool. Thank you for this opportunity, I'm looking forward to going back this summer."

Carlee Wester | Butler County FFA | FFA Camp Scholarship Recipient



"I am a sophomore who has a goal of becoming an agricultural engineer. By receiving this grant, it is one step closer to being able to pay for my education. I have received this grant for being an FFA member. This would represent hard work and pay off, but I would like to see a brighter future in the industry."

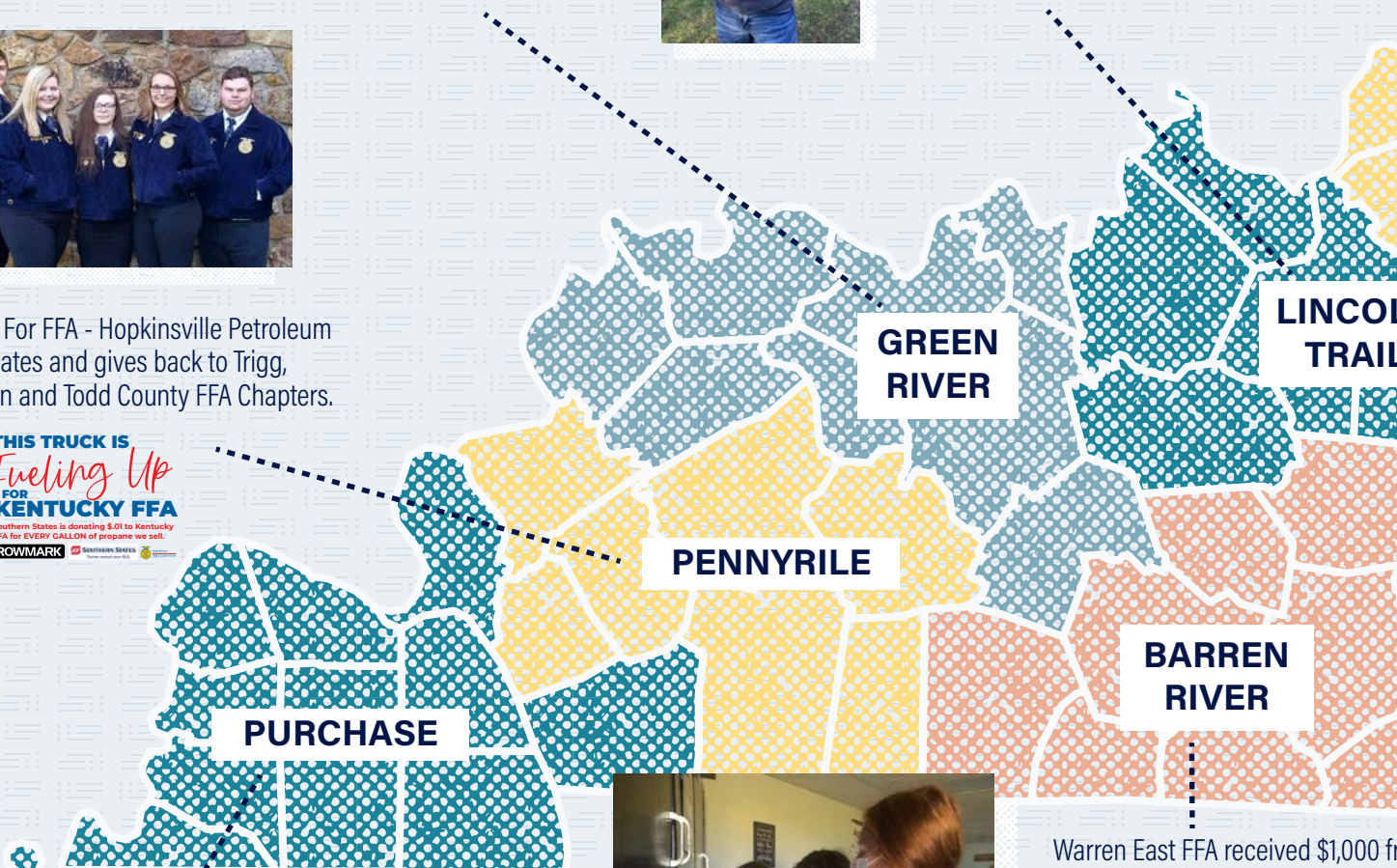
Franklin County sophomore received a...



Brody Higgs, a freshman at LaRue County FFA, received a \$500 SAE grant to construct a new chicken coop.



Fuel up For FFA - Hopkinsville Petroleum participates and gives back to Trigg, Christian and Todd County FFA Chapters.



GREEN RIVER

LINCOLN TRAIL

PENNYRILE

BARREN RIVER

PURCHASE



Warren East FFA received \$1,000 from Days Through Better Ways grant to fund a Chicken project for community...

Carlisle County FFA received a \$10,000 Ag Innovation Grant to purchase new technology for their Ag Power, Structures & Technical Systems Pathway.



Scan for a video update



homore in high school who
of pursuing career in
and being successful about
ring this jacket, I would be
oser to reaching this goal by
o say with courage that I
ed an honor; an honor of
FA member. This jacket
esent that all of my hard
perseverance is starting to
is only the beginning of a
ure in the agricultural

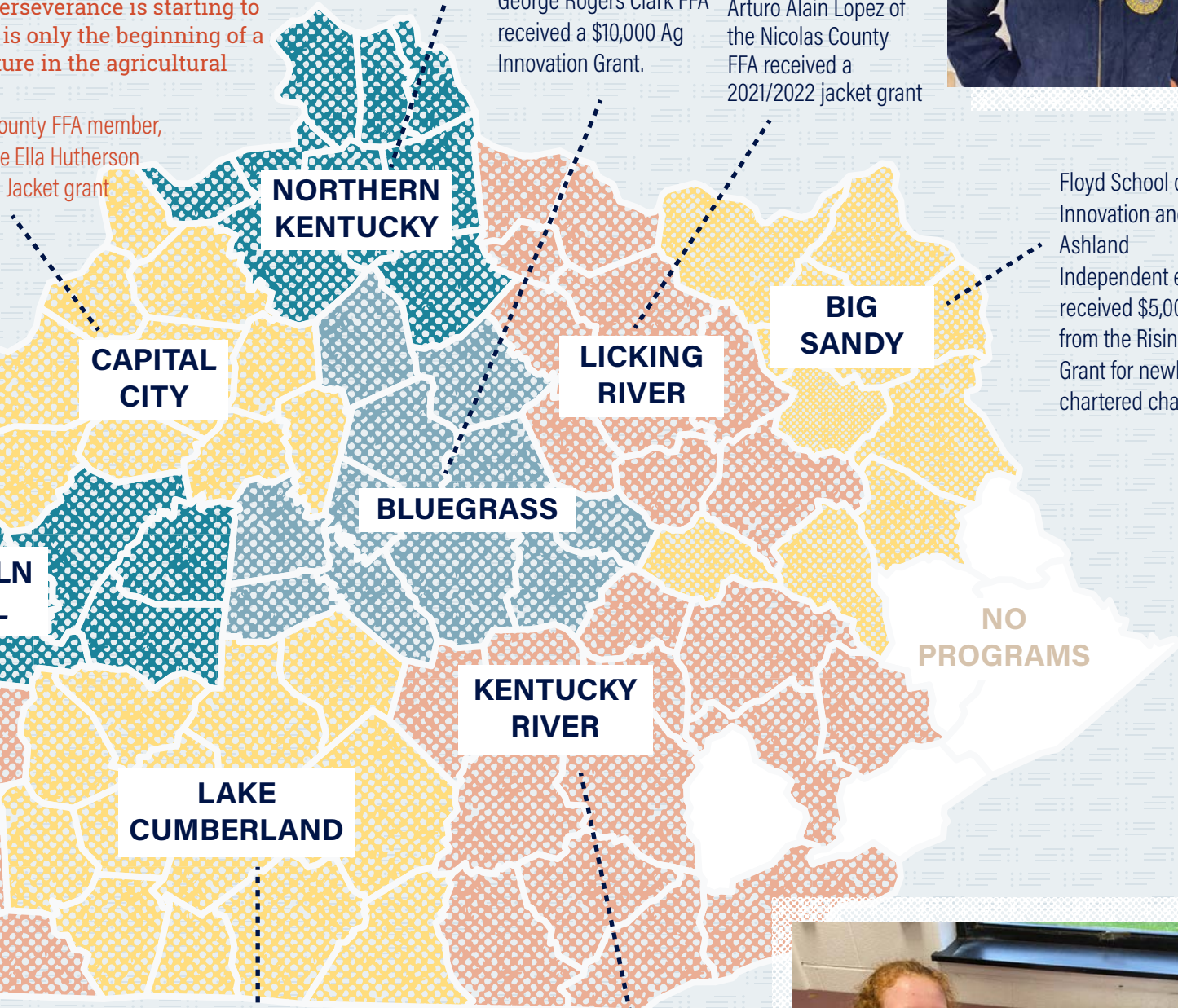
ounty FFA member,
e Ella Hutherson
Jacket grant

Caden Baldwin of the
Simon Kenton FFA Chapter
received a \$500 SAE Grant
to further his woodworking
and woodcarving skills.



George Rogers Clark FFA
received a \$10,000 Ag
Innovation Grant.

Arturo Alain Lopez of
the Nicolas County
FFA received a
2021/2022 jacket grant



Floyd School of
Innovation and
Ashland
Independent each
received \$5,000
from the Rising Sun
Grant for newly
chartered chapters.

from Better
o fund
eds.

Taylor County FFA Received \$1,000 Better
Days Through Better Ways Grants for their
Future Farmers Market.



Rockcastle
County Middle
School received
\$1,000 Rising Sun
Grant.



Our Student Leaders



MALLORY WHITE

of Union County FFA was elected to serve as the 2021-2022 Eastern Region Vice President for the National FFA Organization. Throughout her year of service, White will lead personal growth and leadership training conferences for FFA members throughout the country and help set policies that will guide the future of FFA and the next generation of leaders.

"I've always been passionate about serving people, but I've also become dedicated to serving agriculture. The opportunities that this position has given me are truly once in a lifetime, and it's because of the incredible support that Kentucky and Kentucky FFA have shown me that I'm able to pursue them."



Jonathan Pinkston
State President
Mercer County FFA



Kelly Baird
State Vice President
Spencer County FFA



Brady Lawson
State Secretary
Morgan County FFA



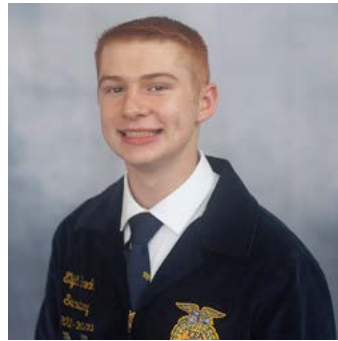
Austin Randolph
State Treasurer
Muhlenberg County FFA



Isaiah Pruitt
State Reporter
LaRue County FFA



Tristann Burks
State Sentinel
Barren County FFA



Elijah Brock
Kentucky River State Vice President
Lynn Camp FFA



Philip Caldbeck
Green River State Vice President
Daviess County FFA



Morgynne Lunsford
Northern Kentucky State Vice President
Harrison County FFA



Sarah Lyell
Purchase State Vice President
Graves County FFA



Rickalyn Rayburn
Big Sandy River State Vice President
West Carter FFA

**2021-2022
KENTUCKY
STATE FFA
OFFICERS**

FOREVER BLUE DONOR

Delmer Dalton

Former Kentucky Ag Ed Leader Funds Camp Scholarships, State FFA Officer Training

When you talk with Delmer Dalton about his 32-year career in Kentucky agricultural education, he'll tell you about opportunities made possible for him by others, a career shaped by events in the world around him, and the impact students and colleagues have had on him.

For instance, after graduating from Eubank High School in Pulaski County, Kentucky, Dalton didn't plan to attend college, but the persistence of his high school ag teacher convinced him. So, three years after graduation and with his wife by his side, he enrolled in the University of Kentucky's College of Agriculture.

His goal was to eventually work for the soil conservation service, but a hiring freeze on federal jobs led him to opt for graduate school in agricultural education, and eventually his first job teaching agriculture at Bryan Station High School in Lexington in 1968.

Six years later, when the Kentucky Department of Education asked him to join the state staff for agricultural education, he applied for a one-year leave of absence, but liked it enough that he spent the rest of his career there.

Dalton served as Executive Secretary for Kentucky FFA from 1977 until 1990, and as Kentucky State FFA Advisor from 1991 until 2000.

Through this work, Dalton has had, and continues to have a tremendous impact on agricultural education in Kentucky. A legacy to which he is adding through his most recent contribution – a \$20,000 donation to the Kentucky FFA Foundation's Forever Blue Fund.

The proceeds from Dalton's gift will be used for scholarships to FFA camp for FFA members at Pulaski County and Southwestern High Schools, which are in his home county. In addition, proceeds will help support FFA state officer programs.

"During his time as Executive Secretary, Mr. Dalton had the first female state FFA officer, the first female state FFA president, and the first African American state FFA president," said Matt Chaliff, the current Executive Secretary for Kentucky FFA.

On a more personal level, Chaliff's high school agriculture teacher, Jeff Hayes, was a state FFA officer under Delmer Dalton. Hayes passed along lessons he learned from Dalton to Chaliff, who used them when he was a state FFA officer, and which he still passes along to every group of Kentucky state FFA officers today.



Delmer and Linda Dalton

"Mr. Dalton had very high standards. He'd say 'bring your shoe shine kit and make sure you have a fresh haircut,' which was his way of saying things needed to be done well and the details needed to be covered. I still tell state officers that," said Chaliff.

Dalton, along with state agricultural education staff member Rodney Kelly, was also instrumental in starting the Kentucky FFA Foundation in the 1980's.

"It was a volunteer group," said Sheldon McKinney, the current executive director. "He worked with the FFA Alumni to make the first board. He (Dalton) thought at the time, if we could ever raise \$40,000 a year, that would be great."

The income of the Kentucky FFA Foundation in 2021 was well over a million dollars.

"The foundation is nearing 35 years old, and in that time, people have come to trust us," said McKinney. "That was because Mr. Dalton had the vision and set the tone. How incredible is that?"

Although he retired in 2000, Dalton continues to be involved in Kentucky FFA, attending events and volunteering to judge contests at the state fair every year.

"Agricultural education and FFA have been part of my life since I was 16 years old," said Dalton. "It's a great organization, and a great learning experience for young kids. We've been fortunate, and I wanted to make a contribution."

"To me, it's really a full-circle sort of thing," said Chaliff. "He helped start the Foundation, and now he's making this contribution. It's just one more way he's making a difference for Kentucky FFA members."

"I don't know if Mr. Dalton would categorize himself as a philanthropist and a visionary, but he really is," said McKinney. "He did his job with excellence for decades, and we get to live off that legacy."

teacher support
programs

2021

An excellent ag teacher is the key to great student experiences.

That's why the Kentucky FFA Foundation funds a Program Development Specialist position focused on serving as a coach and mentor for new agriculture teachers.

Mr. Jeff Hayes is one of the most respected ag educators in Kentucky. He built a successful program in Rockcastle County and many of Kentucky's ag teachers got their start in his classroom as actual students, or student teachers. When he retired in 2019, we were thrilled that he was willing to come on board in a new advisory role.

For three years, he has been quietly visiting teachers, advising and encouraging them. His wise counsel has been vital as teachers have navigated teaching through a pandemic, virtual instruction and coming back to the classroom strong.

Mr. Hayes wife, Morrissa, is a retired high school counselor and often accompanies him on visits. They have been a top notch team that the Kentucky FFA Foundation is proud to offer to our teachers.



"Mr. Hayes has been a crucial part of my first few years of being an agricultural educator. The first time he came to meet with me it was a breath of fresh air knowing I had a mentor like him on my side."

— Darilyn Hamilton, Spencer County High School
Agriculture Teacher & FFA Advisor

2020 - 2021 SCHOOL YEAR IN-PERSON VISITS

Experience	# of Teachers	# of Teachers Visited	Number Retained	Percentage Retained
1st Year	29	30	28	93
2nd Year	27	27	22	81
Experienced	NA	21	NA	NA

FOREVER BLUE ENDOWMENT

Lyon County

Lyon County FFA Alumni Hope to Raise \$100,000 for Ag Teacher Appreciation Endowment

A number of people who value their experiences in the agriculture program at Lyon County High School have joined an initiative to raise \$100,000 and show their appreciation for Lyon County agriculture teachers and FFA advisors past and present.

The funds will be endowed as part of the Kentucky FFA Foundation's Forever Blue program. Reaching their fundraising goal will mean at least \$5,000 would be available to the Lyon County agricultural education program each year. These funds could be used to support student success through scholarships to FFA leadership camps and conferences, FFA jackets, to help students start SAE projects, or for programs that benefit the entire program and community.

Lyon County native Dwight Armstrong and his two brothers, Jeff and Randy, have long supported FFA as a way to honor their former agriculture teacher, Mr. Ray Fowler. When Dwight learned of the Kentucky FFA Foundation's Forever Blue Endowment Fund, he saw an opportunity for their donations to make an even more direct impact on the community where they got their start.

Dwight began reaching out to other previous members of Lyon County FFA, asking if they'd like to contribute to the fund. So far, the response has been a resounding yes.

It turns out that the list of Lyon County FFA alumni contains quite a few people who have gone on from their FFA experiences to be leaders both at home and around the United States. Among other positions within the agriculture industry, Dwight served as both COO and CEO of the National FFA Organization for seven years. His brother Jeff is currently the president of California Polytechnic State University in San Luis Obispo. Randy Armstrong is back on the family farm in Lyon County after retiring from a career in which he served as administrative vice president for Jim Smith Contracting.

Other Lyon County FFA Alumni include David Beck, president and CEO of Kentucky Venues, and Jay Akridge, provost and executive vice president for academic affairs and diversity at Purdue University.

One thing these men seem to share is the common thread of having an agriculture teacher who motivated them. Clyde Grace, Ray Fowler and Stanley DeBoe are names that came up again and again.

[**Click here for a complete list of donors who have contributed to the Lyon County FFA Endowment.](#)



1982 Lyon County FFA Chapter

“Being in FFA took young guys like us and planted it in our brains that we could accomplish just about anything we wanted to if we had the desire to do it,” said Randy.

In addition to the Armstrongs, Becks, and Akridges, a host of other families and individuals have joined the initiative as founding donors. Like the others, they haven't forgotten the influence made by their agriculture teachers, and want to ensure that future Lyon County agriculture students and FFA members have the opportunities they did.

“It takes a lot of time, energy and resources to run an ag program,” said Akridge. “We need exceptional young men and women who can inspire a young person and help them understand opportunities and possibilities. Their ag teacher can be the source of inspiration that gives students the confidence to take that next step in their education.”

“More than the money, it's the grassroots support of the program and the recognition of what it does for young people that's important,” said Dwight.

By pooling their donations, champions of Lyon County FFA can make a real impact without any one person having to give an enormous gift. No amount is too small as others consider joining this effort. All gifts help tie the program even more tightly to the community.

“Hopefully this gives the program some resources to work with it didn't have before,” said Akridge. “It puts a spotlight on the ag program – the alumni are sending a message that the program is important to them.”

“I'm a big believer that we have a real need for leadership in our society,” said Beck. “FFA provides you the opportunity to make decisions, apply leadership, and learn to work with others. We hope this can become an example for other chapters. Give your support locally, but do it with the expertise and guidance of the state foundation.”

2021 State Stars

LUKE MILLAY, STAR FARMER



Living and working on his family's farm has helped instill a passion for farming in Luke Millay. His custom meat business, Millay Meats, has helped him extend his animal production enterprise beyond the farm gate, and filled a need for a quality protein supply.

Click on each star's phone to watch a video about their SAE!



OLIVIA MOORE, STAR IN AGRIBUSINESS



Working in her family's garden is something that Olivia Moore had always done. It was a natural transition for her to turn that into her SAE when she joined the Western Hills FFA chapter as a freshman. Her hard work and the thoughtful way she's grown her business has turned her enterprise into something of which anyone would be proud.



JORDAN REDDICK, STAR IN PLACEMENT



Even in high school, Jordan Reddick already played a vital role in the day-to-day operations of his family's diversified poultry, beef and row crop farm in Carlisle County. A freshman at Murray State University, Jordan's ultimate goal is to come home and take his place on the family farm alongside his brothers, parents, and grandparents.



Thank you to Tarter Farm & Ranch for donating the services of their talented video production studio to help us showcase our State Stars!



2021 Blue & Gold Gala



We were thrilled to be back together in person for the 2021 Blue & Gold Gala, and even more thrilled to set a fundraising record!

Through this year's Blue & Gold Gala, we raised a record-setting \$132,500. That's more than we've raised at any previous Blue & Gold Gala. Our supporters raised that money by purchasing Gala tickets, buying auction items or raffle tickets, or donating to our Fund the Cause opportunity.

The funds raised at the Blue & Gold Gala are used to provide Kentucky FFA members with FFA camp scholarships, FFA jacket grants, Agricultural Education grants, and scholarships to the Washington Leadership Conference.

\$132,500

raised at this year's Blue & Gold Gala



MARK YOUR CALENDAR!

2022
Blue & Gold Gala
at
THE LEGACY

SATURDAY, SEPTEMBER 10TH
THE LEGACY AT DANT CROSSING
GETHSEMANE, KENTUCKY

kyffa.org/foundation-gala



Platinum Sponsors



Gold Sponsors



Silver Sponsors

Billy Ray & Jane Smith
Community Trust & Investment Company
Gatormade Trailers
Hinton Mills
Kentucky Venues
Ky Friends of Coal
Peterson Farms
Tim & Lori Hughes
UK College of Agriculture, Food & Environment

Bronze Sponsors

Aaron & Melissa Miller
Anthony & Jill Koch
Central Ky Ag Credit
Charlie & Emily Edgington
Fayette County Farm Bureau
Hunt Brothers Pizza
Kentucky Cattlemen's Association
Kentucky Pork Producers
UK College of Ag Office of Philanthropy & Alumni

Blue & Gold

Legacy Donors

These donors have made plans to give to the Kentucky FFA Foundation through their estates.



- CHARLES BERRY
- KEITH & LAURA BUCKINGHAM
- DR. CHARLES BYERS
- JEFF & MORRISSA HAYES
- DR. JAY & SHARON JACKMAN
- KEELAN & DIANA PULLIAM
- KEN & BRENDA REED
- MIKE & SUSAN RICHEY
(IN HONOR OF AG TEACHER JAMES LADD)
- GLENN & MAGGIE STITH

Exceeding Expectations

Give FFA Day

On this one day during National FFA Week, we ask all our supporters to give to help support SAE and Shark Tank Grants.

We put out the call asking Kentucky FFA Supporters to focus their giving on the Thursday of FFA Week, and they answered in a big way. Our fundraising goal for Kentucky Give FFA Day was \$10,000. Long-time supporter Owensboro Grain pledged to match all donations up to \$15,000, and FFA alum Nick Carter pledged to match all donations up to \$5,000. By the end of the 24-hour period, we had raised a total of \$39,801 for Kentucky FFA members.



\$39,801

**dollars raised in a single day for
Kentucky FFA**

137

donors

Thank you to
Owensboro Grain for
matching the first
\$15,000 raised on
Kentucky Give FFA
Day!

FOREVER BLUE DONOR

Hopkinsville

Hopkinsville FFA Alumni Create Endowment to Support Local Ag Ed Programs

There is a long list of successful Hopkinsville High School graduates who credit their agriculture teacher, Mr. Earl Webb, for having a tremendous influence on them in high school.

"We had an excellent vocational agriculture/FFA advisor," said Terry Ashby, who graduated in 1975. "He had a very positive influence on several of us in Hopkinsville and Christian County. Because of that positive impact I wanted to do something in appreciation and recognition of him and other FFA advisors."

A couple of years ago, Ashby came up with an idea for a fund to support current agriculture programs in Christian County, while recognizing the impact of current and past agriculture teachers. He bounced the idea off a few of his classmates, who wholeheartedly supported it and were excited to get involved.

One of those classmates, Keith Buckingham, credits his time in Mr. Webb's agriculture classes for giving him a sense of direction, leadership skills, problem solving practice, and other tools that he still uses in his day-to-day career with Bayer Crop Science.

Buckingham helped Ashby make a connection with the Kentucky FFA Foundation. Executive Director Sheldon McKinney loved the idea too, and not only helped the Christian County group get organized, but used Ashby's idea as the basis for the Foundation's Forever Blue Endowment Fund.

"The goal of the Kentucky FFA Foundation's Forever Blue endowment program is to give donors the opportunity to make a difference in something they are passionate about - the lives of FFA members - for generations to come," said McKinney.

"The FFA Foundation will disperse 5 percent of the total endowment annually to accomplish our mission of Growing Leaders in Christian County. When we set up the framework, we thought, 'this has to still work in 50 years, when there's a different Foundation director, different teachers, agriculture is different.' We believe we have created that opportunity to be philanthropic for generations, in a sustainable way."

Locally, the goal is to raise \$100,000 for the Christian County Ag Teacher Appreciation endowment from supporters of agriculture in Christian County. The proceeds will be granted directly to the agricultural education programs at Hopkinsville High School and Christian County High School each year. These funds will be used by the programs to provide opportunities for agriculture students, like helping them pay for trips to FFA Camp, National and State FFA Convention, and purchase FFA jackets.



Mr. Earl Webb

Those are exactly the kinds of opportunities Mr. Webb showed his students, and they credit him with setting a foundation for their future careers. David Delaney, who was a member of the same class as Ashby and Buckingham, said his four years with Mr. Webb helped him develop from a timid freshman to a confident graduate with a clear direction.

"I will forever be grateful for the huge impact Mr. Webb and FFA had on my development during my high school years," he said. "The skills that I obtained during this time have served me well over and over again throughout my life."

"I think young people today have more challenges than they've ever had," said Ashby. "Agricultural education and FFA can be a big benefit to help young people as they begin to consider careers and even what their whole ethics and morals will be. We saw this as a great opportunity to help young people make great decisions to benefit them like it has us."

Yet another classmate, local farmer David Wimpy, has made a gift as well, and is excited about the possibilities.

"I just can't emphasize enough the importance of FFA, and if you've got the right teachers in there, the impact it can have on kids at an early age. It can be life-changing," said Wimpy.

"Mr. Webb was a pioneer. He started the first ag program at Hopkinsville High School. I'm still using things he taught me in class today, and everyone in our 1975 class can tell you the same thing - how much impact FFA had on our careers and our love for agriculture."

Buckingham and his wife, Lolly, have designated a portion of their estate be gifted to the endowment.

"It was important for us to give something back to the process that helped us so much," said Buckingham.

[Click for a complete list of donors who have contributed to the Christian County FFA Endowment.](#)

Ways to Give

There are many ways to give to the Kentucky FFA Foundation

Gifts of Cash

The majority of gifts to the Kentucky FFA Foundation are in the form of cash. If you itemize your tax deductions, you may claim as a charitable deduction a cash gift of up to 50 percent of your adjusted gross income.

Gifts of Securities

Gifts of appreciated securities can provide special tax advantages: you may completely avoid capital gains taxes; and the fair market value of the stock may be claimed as a charitable deduction on your income tax, up to 30 percent of adjusted gross income for those who itemize, with a five-year carryover.

The simplest way to make a gift of stock is to instruct your broker or banker to transfer it to the Kentucky FFA Foundation. The broker should then contact the Kentucky FFA Foundation for further instructions.

Gifts of Real Estate

Gifts of homes, farms and other real property can receive the same tax treatment as gifts of securities: no capital gains tax plus deductibility at fair market value. If this is appealing to you, please make plans to discuss intent and restrictions with the Kentucky FFA Foundation.

Gifts of Life Insurance

When you name the Kentucky FFA Foundation as the owner and sole beneficiary of a life insurance policy, you receive an immediate income tax charitable deduction for the lesser of the policy's fair market value or the net premiums paid. Premiums you pay later are also tax deductible.

Memorial & Honor Gifts

You may designate gifts to remember or honor a relative or friend for a specific purpose, or you may allow the Foundation to use such gifts for general support. Acknowledgment will be made to the family of the deceased if the name and address of the closest survivor is provided.

Matching Gifts

Some are able to increase their gift to the Kentucky FFA Foundation by employer matching. If your employer has such a program, your gift may be multiplied once, twice, or even three times. Usually, your employer's personnel department can provide information about a matching gift program and forms to send with contributions.

Estate & Planned Gifts

Although outright gifts provide valuable support for current programs, estate giving provides substantial support for future programs. This form of giving is particularly suitable if you desire to make a larger gift through your estate rather than in your lifetime. The allowable estate tax deduction for charitable gifts remain unlimited under the new tax laws.

Wills

The most common form of an estate gift to the Kentucky FFA Foundation is a specific bequest in a will. You should arrange to draft your will with your attorney. Foundation staff are available upon request to confer with you and your attorney in drafting the appropriate bequest clauses.

Gifts in Trust

If you wish to receive income during your life and at the same time provide a significant gift to the Kentucky FFA Foundation, you should consider establishing a charitable remainder trust, that is, a life income trust.

Gifts-in-Kind

Another way to support the Foundation is through gifts of tangible personal property.



Forever Blue Donors

To be a part of our Forever Blue Endowment program, donors must give at least \$10,000. They can choose to focus their gift around one of three objectives: Growing Leaders, Building Communities or Strengthening Agriculture. Donors can also designate that their gift benefit a local program or programs. In this way, Forever Blue Donors can design a legacy that meaningfully benefits their own communities and pays tribute to the things they find most impactful about Kentucky FFA.

ARTHUR GREEN

THE BILL GATTON FOUNDATION

CALLOWAY COUNTY FFA ENDOWMENT

***CHRISTIAN COUNTY FFA ENDOWMENT**

DELMER & LINDA DALTON

DR. CHARLES BYERS

DR. LUTHER & BRENDA HUGHES

DR. TONY & LISA BRANNON

THE LATE JOHN COLLIVER

KEELAN & DIANA PULLIAM

KEN & BRENDA REED

**KENTUCKY ASSOCIATION OF
AGRICULTURAL EDUCATORS**

KENTUCKY FFA ALUMNI

***LYON COUNTY FFA ENDOWMENT**

MATT & BETSY LONDON

NICK CARTER

**click entry for a complete list of donors.*



THANK YOU TO OUR 2021

Sponsors

5-Star Sponsors

\$25,000 - \$1,000,000



4-Star Sponsors

\$10,000 - \$24,999



NATIONAL
FFA ASSOCIATION



RANDY & JUDY ARNOLD



TOYOTA



3-Star Sponsors

\$5,000 - \$9,999

Altria Group Inc
Appharvest
Army ROTC
Bayer
Beam Suntory
The Cralle Foundation
Darling Ingredients
Dwight Armstrong
EO Robinson Mountain Fund
Gatormade Trailers
Hatton Foundation
Hutson, Inc.
James Speaks

John Deere
Kentucky Corn Growers Association
Kentucky Exposition Foundation
Kentucky FFA Alumni & Supporters
Kentucky Welding Institute
Kubota Tractor Corporation
Matthew & Betsy London
National Association of Agricultural
Educators
Planters Bank
David Delaney
Rural King
Terry & Donna Ashby

2-Star Sponsors

\$2,500 - \$4,999

Beck's Hybrid
Beyke Farms
Billy Ray & Jane Smith
Christian County Agri Business Association
Community Trust & Investment Co
Dr. Jay and Mrs. Sharon Jackman
Dr. Duane & Patricia Miksch
Hinton Mills
Jeff & Morrissa Hayes
Kelly Buchanan
Kentucky Friends of Coal, Inc.

Kentucky Poultry Federation
Kentucky Venues
Kim White
Lyon County Farm Bureau
Nutrien
Tim & Lori Hughes
University of Kentucky College of Agriculture,
Food & Environment
Wesley Johnson
Western Kentucky University Ag Dept

1-Star Sponsors

\$1,000 - \$2,499

Aaron & Melissa Miller
Affinity Farms
Agribusiness Association of Kentucky
Ale-8-One Bottling Company
Allen County-Scottsville FFA
Alvie Smith
Andrea P'Pool
Anthony & Jillian Koch
Ashley Macy
Ashley & Brandon Weaver
Atmos Energy Corp
Bluegrass Stockyards
Cal-Maine Foods
Central Kentucky Ag Credit Association
Charlee Doom
Charles & Shirley Guess
Chelsea McFarland Jacobson
Chris Mastin
Christian County Treasurer
Claire & Philip H Caldbeck
Commonwealth Agri-Energy
Dan Flanagan
David & Rita Wimpy
Debra Hutchinson
Don Thorn
Dr. Donald Colliver

Dusty & Ginger Moore
Fayette County Farm Bureau
Fresh Start Farms
Red River Ranch
Gordon & Joyce Davis
Hooks Farms
Hopkinsville Elevator Co, Inc
Howard Downing
Hunt Brothers Pizza
Jamie & Dr. Kristie Guffey
Jane Grace
Jay Day
Jeffrey Armstrong
Jimmie Claycomb & Betty
John C Campbell
John Rudolph
Jonathan Fox
Jonathan Furnish
Jonathan Shell
J.R. & Julie Shinkle
Kentucky Livestock Marketing
Association
Kentucky Pork Producers Association
Kentucky Small Grain Grower's
Association
Kentucky Soybean Board

Kentucky State Horticulture Society
Lawrence Hall
Little Kentucky Smokehouse
M. Randall Wood
Mitch Vanover
Ohio Valley Crop Insurance
Paris Stockyards
Paul West
Rice Agri-Marketing
Richard Ramey
Rip's Farm Center
Robey Farms
Russ & Dorothy Bingham
Steve & Debra Seymour
Steve Kelly
Dr. Timothy & Kacy Caboni
Trumbo Farms
UK Office of Philanthropy & Alumni
Union County Livestock-Jim David Meats
Warren County Farm Bureau
Willie Hawkins - Syngenta
Wright Farms

2021 GIVING OVERVIEW

- > **Number of donors** **688**
- > **Number of gifts** **1153**
- > **Total amount donated** **\$1,165,154**
- > **Average gift size** **\$1,010.54**

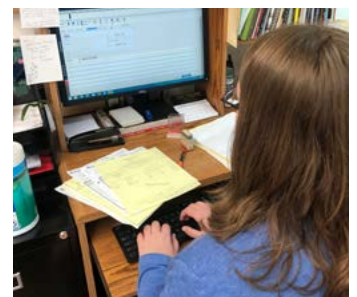
Gold Sponsors

\$500 - \$999

2007-2008 Kentucky FFA State Officer Team
 Aaron McDonald
 Adair County High School FFA
 AJ & Emily Mitchell
 Albert Peterson
 Anthony Lautieri
 Bluegrass Ingredients
 Bluegrass Region in Memory of Neal Floyd
 Bracken Co FFA Alumni
 Brad Chambliss
 Brandon Davis
 Brandon Gilles
 Brenda Oldfield
 Brent Bugg
 Candice Rezvania
 Carrie Davis
 Casey Mulberry
 Chelsea Stratton
 Clyde Moore
 Continental Industries
 CPC Livestock Nutrition
 Dale Stith
 Damon Talley
 Daviess County High School
 Dr. Mike McDermott
 Eastern Kentucky Department of Agriculture

Elaine Mink
 Eton Vicknair
 First Baptist Church
 Fredonia Valley Bank
 Glenn and Maggie Stith
 Hallway Feeds
 Hardin County Farm Bureau
 Holly & Chris Carroll
 James & Carrie Ballinger
 Jarad Spinks
 Jarrod Bennett
 Jay & Michelle Akridge
 Joe Wright
 John David Fourqurean
 John Johnson
 Joseph Brock
 Josh Mitcham
 Julie Shaw
 Kentucky Dairy Dev Council
 Kentucky Propane Gas Association
 Kentucky Retail Federation
 Kentucky Veterinary Medical Association
 Kroger
 Laura Knoth
 Lisa Smith
 Meade Stock Farm

Mike Richey
 Murray State University Collegiate FFA
 Myron & Pamela Moore
 National Grid Renewables
 Neil & Heidi Wilson
 Nelson County Farm Bureau
 Oldham Co. Farm Bureau Federation
 Pamela Chaliff
 Randal Williamson
 Randy Lee Gray
 Raven McMaine Kropf
 Rob Payne
 Rod Hoffman
 Roger Hanagriff
 Ryan Brothers
 Sanford & Sons Sales & Services
 Sheldon & Bradley McKinney
 Southwest District FFA
 Spencer County Farm Bureau
 Springville-Griffith Institute Central School
 District FFA
 Stewart & Kay Payne
 Stith Brothers
 Sugar Valley Rural Charter School FFA





Silver Sponsors

\$250 - \$499

Adam Graue
 Adams & Ivey PLLC Law Office
 Andy Joe Moore
 Angela Vaughn
 Arnold & Arnold, Inc
 Arthur Green
 Ashley Parsons
 Austin Hazelwood
 Bestway Ag
 BFW/Marcum Engineering
 Brenda Bruington
 Chad Anglin
 Christian County Chamber of
 Commerce
 Clint Quarles
 Col Lloyd Dean
 David Peterson
 Dean David Brown
 Debra Wilder
 Dorothy & David Paschall
 Dr. Charles Byers

Dr. Tony & Lisa Brannon
 Dwight Sears
 Ernest Williams
 Feeders Supply Company
 Gary Keeton Agency
 Gerald Larson
 Greg Thomas
 Gro-Tec, Inc.
 Hermitage Farms
 Jane Pantle
 Jim & Jeanne Caldwell
 John M Simpson
 Jordan Beyke-Hall
 Katie Collett
 Kentucky Castle
 Kim & Scott Proffitt-Burks
 Kyle Kelly
 Kyle Turpen
 Lesley Eldridge
 Lindsey & Dennis Hecht
 Lisa & Dustin Billings

Mandy C. Gray
 Mark & Tracy Thomas
 Mark Johnson
 Mary Beth Shackelford
 Matt & Julie Chaliff
 Matt Stone
 Melanie Covell
 Michael Ross
 Nancy Mussetter
 Patricia Koed
 Paul Howlett
 Philip Armstrong
 Princeton Community High School
 Red Lion Area Senior High School
 Rhonda Back
 Rob & Janna Clark
 Robert Covington
 Robert Fischer
 Roger Dennis
 Ryan King
 Scott Jernigan

Seay Farms
 Staci Glaser
 Stover FFA
 Susan Tebbs
 Ted Parrish
 Terry Waters
 Todd Pinkston
 Trigg County Farm Bureau
 Wesley Scott

Bronze Sponsors

\$249 and under

Aaron & Celeste Harned	Chad Renner	Dings, Dents -N- Details	James Edd Hill	Kelley Clements
Aaron Bond	Charles Berry	Don Barker	James Bailey	Kelley Lula
Aaron Goodpaster	Charles Carter	Donald Lane Logan	James Bonta	Kelly Grizzle
Aaron Reding	Charles Grindle	Donald Dunn	James Brisby	Kenneth Brammell
Abbigayle J Willgruber	Charles Miller	Donna Parker	James Douglas Belcher	Kenneth Edwards
Abingdon High School FFA	Charles Whitley	Donna Remington	James Key	Kenneth Oakley
Agnus Church	Charlie & Emily Edgington	Donnie & Shindy Berry	James Ladd	Kenneth Reed
Alan Taylor	Cheryl Williams	Doug & Ethelwyn Matthews	James McGuire	Kent Payne
Alex Richardson	Chris McDonald	Doug Edge	James Midkiff	Kentucky Department of Education
Alex Tingle	Chris Mitchell	Douglas Coyle	James Morgan	Kevin Adams
Amy Samples	Christine Pawley	Dr Paula Quinn	James Rudolph	Kevin Anderson
Amy Schadler	Cinda Wilson	Dr Paul Woosley	Jamie & Michael Meredith	Kevin Jeffries
Amy Utterback	Cindi Bowman	Dr. Laura Winstead	Jamie or Quay Hilverding	Kim Weseli
Andrew Deluca	Cindy Harris	Dr. Rodney Tullock	Jamie Potts	Kimberly Spangler
Andrew Mack	Cindy Lester	Dr. William Moody	Jamie Spugnardi	Kori Kudera
Andy Brumfield	Claire & Jonathan West	Drew and Holli Hatmaker	Janet Piechocki	Kyle Turpen
Anna Burnett	Cletus Coats	Dwayne Mitcham	Janice Misere	Langdon Winburn
Anthony Gex	Clifty Farm Country Ham	Eddy & Cathy Wright	Jason Issac	Larry Atkinson
Ashbel Brunson III	Conner Richardson	Edward McQueen	Jayna Thompson	Larry Hearrell
Ashlee Castle	Conte Flowers	Edward Snead	Jeff H. Morris	Larry Mayes
Audie & Tori Cherry	Coral Hill Dairy	Edward Strauss	Jeff Pendleton	Larry Thomas
B&E Farms	Cortney Daugherty	Edward Trunnell	Jeff Rice	Leland Kinnamon
Barb Howard	Coy Trapp	Elijah Fortner	Jeff Roark	Lellan S Barlow Sr.
Becky Kinder	Craig A Stanfield	Elizabeth Lunsford	Jeffrey and Diana Koonce	Leonidas Skaggs
Ben & Katelyn Pinkston	Cynthia Russell	Elydia Thomas	Jeffrey Albright	Lisa Graham
Ben Bolinger	Daniel Mattingly	Eric Bullock	Jenna Burke	Logan and Ruth Ann Layne
Ben Koostra	Daniel Taylor	Eugene Schwartz Jr.	Jennifer Tucker	Logan County DHIA
Benny Lile	Danielle Greenwell	Evan Davis	Jenny Richardson	Lori Purtzer
Beth Nare	Danielle Renee Harmon	Evelyn Raymer	Jeremiah Johnson	Lori Stephens
Betsy Satterfield	Danny Montgomery	Fellowship Of Christian	Jerry Gilliam	Lowell Newton
Beverly A Jeffers	Danyale Atwell	Farmers International	Jerry Hughes	Lucas Alan Goodman
Bill & Linda Register	Darrell & Linda Dickerson	Fran McCall	Jill Butler	Lucinda & Dean Ikeda
Bill Polyniak	Darrell & Paige Allen	Franklin Cheatham	Jimmy Allen	Lucinda Thompson Pease
Billy Hall	Darrell Keeling	Fred & Stacy Sipes	Joe & Teresa Goggin	Lucy Anderson
Bj Franks	Dave & Toni Rhodes	George Bittel	Joe Simon	Luke A Trapp
Bland Baird	David & Irene Wyrick	Gilkison Farms	Joenelle Futrell	Luke Millay
Bobby & Nancy Priest	David & Lauren Black	Ginger Gilbert	John A. Huffman	Mac & Suzanne White
Bobby Oliver	David Coomer	Grace Gorrell	John Hammond	Mac Colliver
Brandi Leigh Gann	David Edward Burbrink	Gracie Furnish	John Logan Forsythe	Mackenzie Gartland Jones
Brandon Gabbard	David Goodlett	Gracie Lagadinos	John R Story	Madison Schmidt
Brandon Tanner	David Kalb	Gracie Staude	Jon Douglas Hall	Mallory McDonald
Brenda Paul	David Moore	Grahams Boots, Work, & Western Wear	Jonathan G Reynolds	Marc Colson
Brent Woodrum	David Wayne	Grant Peterson	Jonathan Pinkston	Marcie Bergdall
Brian Chism	Debbie & Troy Muse	Hannah Huffman	Joseph B Taylor	Marcus Willinger
Brian England	Debbie Scott Schultz	Hannah Perkins	Joseph Barnett	Mark Chapman
Bruce Lindsey	Debbie Taylor Smith	Helen Emily Challis	Joseph Cole	Mark Grimes
Bryan Lively	Debbie Ellis	Helena Pitcock	Joseph Strunk	Mark Hatfield
Buffalo Trace Distillery	Debbie Meek	HH & Kathy Barlow	Joseph Tapp	Mark Stclair
Cade Lejeune	Debbie Reed	Holli Pritchard	Joyce Stubbs	Marti Day
Caitlin Oakes Turner	Deena Glenn	Hunter-Anne Julian	Julie Osborne	Martin Williams
Caleb Ward	Dennie Lee Ferrell	J M Celsor	Justin Davis	Mary Brown
Callie Hobbs	Dennis Anderson	J. Lynn See	Kaitlin Sisk	Mary Cannon
Carol & Sam Taylor	Derek & Mary Adams	Jackie Wahrmond	Karen Hutchison	Mary Cochran
Carter County Farm Bureau	Dexter Knight	Jackson Tolle	Katelyn Eathington	Mary Reed
Cassie Goff	Dianna Mattingly	Jacob & Shelbie Rogers	Katie Hickerson	Maryanna & Morgan Smith
Cecilia Adams	Dianne Lewis		Keeneland Foundation, Inc.	

Bronze Sponsors (continued)

\$249 and under

Matt & Darilyn Hamilton	Nina Crutchfield	Robert Lacroix	Shelby Brown	Tom or Lavon Moorman
Matt Hinton	Nolan Taylor	Robert Spillman	Skylar Jolly	Tom Evans
Matt Jolly	Pamela Miller	Robin Jones	Stacy Middlebrooks-Berk	Tom Meehl
Matthew Wood	Pamela Riley	Rodney Dale Kelly	Stephen Hubbard	Toni Myers
Mattie Mink	Patricia Dietz	Rodney Leigh	Stephen R. Ogle	Trish Montgomery
Meghan Edwards	Patrick Robinson	Roger Miller	Stephen Richardson	Trisha Campbell
Melisa Clark	Paul Primavera & Associates	Roger Vinson	Stephen Wilmhoff	Tyler & Kirby Green
Melissa Blackburn	Paul Bachi	Ronald Sa	Steve Anderson	Tyler Delawder
Melissa Milne	Paul Conner	Roy W. Lancaster	Steve Davis	Tyler Wilson
Meredith Dubree	Paula Quinn	Ryan Franklin	Steve Lee Dunn	Victor Weathers
Michael & Dr Rebekah Epps	Pavla Link	S L Sartain	Steve Webb	Virgil Quisenberry
Michael Fields	Payton Carter	Sam Spillman	Steven & Jeanette Rudy	Warren Beeler
Mike & Terri Duggins	Price Smith-FPC Farm	Samuel Evans	Steven Dickey	Wayne S. Long
Mike Lehn	Prosolutions, LLC	Sara Greene	Steven Wills	Wendy Neyland
Monte Shinkle	Quin T. Sutton	Sarah Marshall	Sydney Snider	Wes Williams
Monty Craigmyle & Son Farms, Llc	Rachel Walker	Savannah Robin	Tammy Davis	William Wallace Evans Jr.
Morgan McQuerry	Ralph Phillips III	Scott Strickland	Taylor Hancock	William C. Hundley
Morgan Smith	Randall H Armstrong	Seth Felts	Teddy Hiler	William Hayden
Natalie Gupton	Randy Peek	Shackelford Farms	Teresa & Randy London	Willis G. Faust
Natalie Roberts	Richard Gale Heath	Shannon Mabry	Terry Shartzter	Willy & Sarah Campbell
National Corvette Museum	Ricky Woodall	Shannon Moore	Theresa Anderson	Woody Allen Clark
Nelson Key	River Valley Ag Credit	Sharma Browning	Thomas Poole Jr.	WR Huddleston III
Nick Chism	Robbie Alexander	Sharon Burton	Tim Coomer	WT Congleton
Nicki & Elizabeth Covey	Robert & Tracy Fulling	Sharon Eichhorst	Tim Thornberry	Zach Hobbs
Nikki Warford	Robert Biltz	Sharon Spencer	Tina Adams	
	Robert Cooperrider	Sheila Harrington	Todd Clark	





GROWING TOMORROW'S LEADERS

YOUR DONATION

Give \$10 with each Ag Tag

YOUR COMMUNITY

*Half of the funds for 4-H and FFA
come back to your local clubs
and chapters.*

OUR LEADERS

*Support statewide programs
impacting 274,000 students enrolled
in 4-H, FFA and KY Proud members.*



By making a \$10 donation with your Ag Tag, you are choosing to invest directly into the future of Kentucky agriculture. Donations are divided equally between FFA, 4-H and Kentucky Proud with half going directly back to your County. Thank you for your support.

